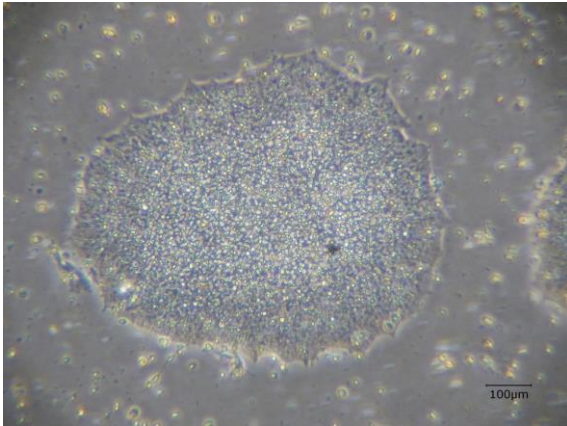
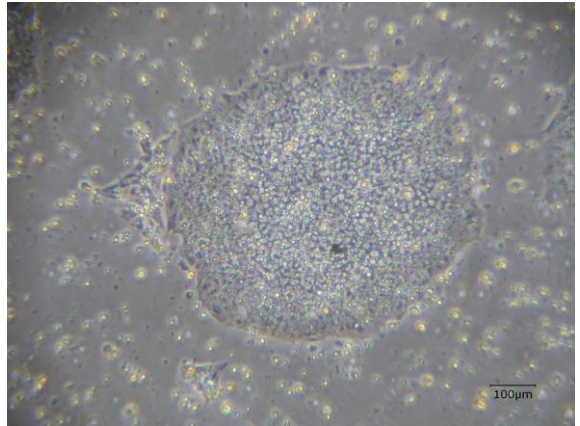


## 【 CiRA-j-1158 】 Morphology of iPSC colonies

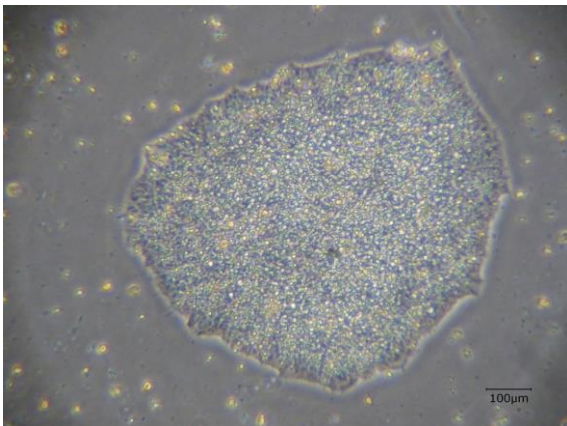
CiRA-j-1158-A: passage-3



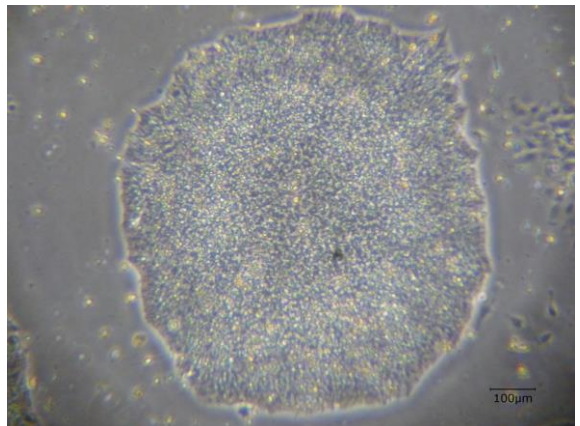
CiRA-j-1158-B: passage-3



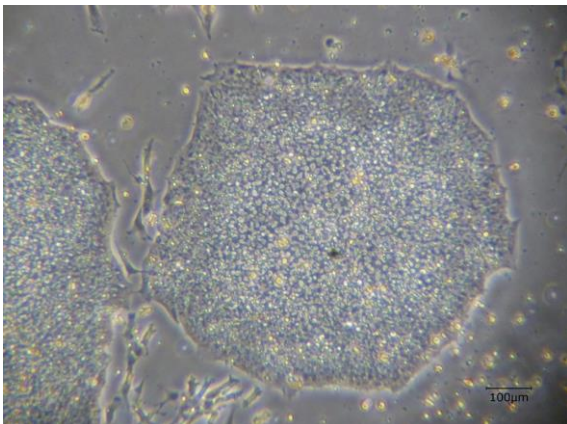
CiRA-j-1158-C: passage-3



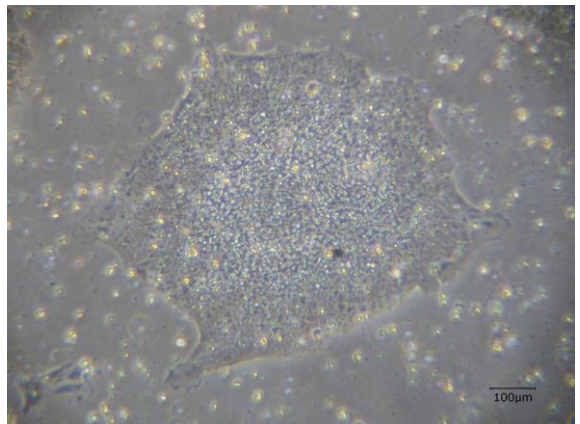
CiRA-j-1158-D: passage-3



CiRA-j-1158-E: passage-3



CiRA-j-1158-F: passage-3



( All images were captured at 4x magnification )